

CAR PARKING FOR MACCL AT WOODBANK PARK, SATURDAY 7TH DECEMBER 2024

Please read carefully! Depending on when you arrive, you will be directed to a different car park.

Note. There is no parking within Woodbank Park itself, so there is a walk of minimum 500m to race HQ.

Car Parking Areas

There are four primary car parking areas for the event. Please try to park in the designated parking areas rather than in the residential streets near the park.

Please use the car parking as follows:

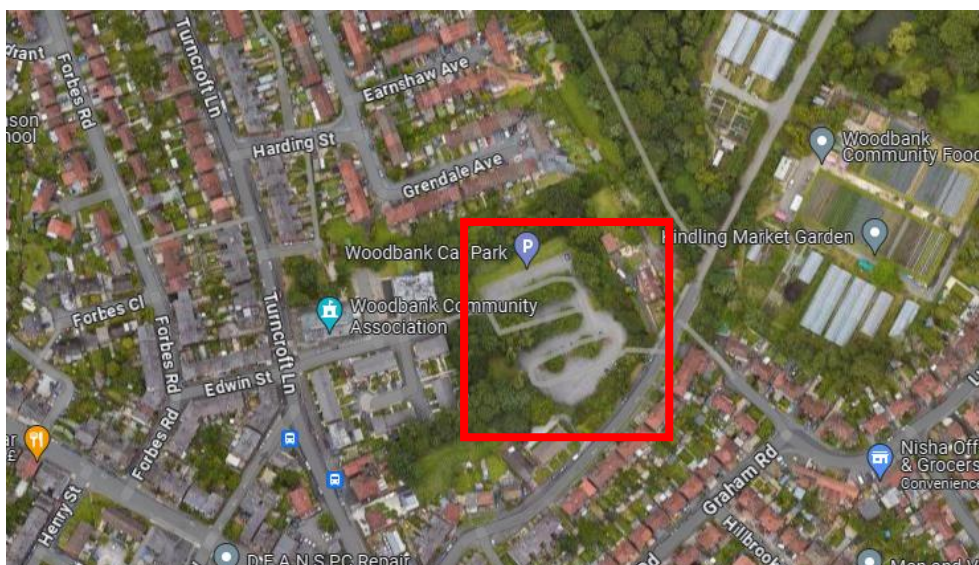
Car Park 1 – Woodbank Main Car Park: Early arrivals (before 12 pm) for junior races and anyone bringing tents, gazebos or large equipment.

Car Parks 2 and 3 - Offerton: Later arrivals (after 12 pm) coming for women's and men's events. have been identified and these will explicitly prioritised in pre-race information in preference to on-street parking, so as to reduce the impact on local residential streets. Car sharing will, of course, be encouraged, to minimise the numbers of vehicles needing to park.

Car Park 4 – Vernon Park: This can be used by any runner as an alternative. There is a significant walk up hill to get to race HQ from this car park.

Details of parking areas below.

Car Park 1 - Woodbank Car Park – use SK1 4BN



Over 100 spaces. Carpark entrance is limited to vehicles no wider or taller than 2.0m. Please follow marshals' directions to ensure tight parking and efficient entry / exit. If car park is full, you will be directed to another car park.

Residential parking immediately outside the carpark entrance, and also parking for the Woodbank community centre is strictly out of bounds for competitors.

Car Park 2 - Area at the end of Curzon Road. SK2 5DF



Approximately 100 spaces. Please follow marshals' directions to ensure tight parking and efficient entry / exit. Enter via Curzon Road, from A626, Marple Road. Walk to race HQ, via Woodlands Park, approximately 900m and flat, but likely to be muddy in places. The route to HQ will be marked.

Car Park 3 – Former Offerton High School site. SK2 5DS



Approximately 100 spaces. You will be directed to Car Park 3 if Car Park 2 is full, but you can choose to use it anyway. Enter car park via Fairway from A626, Marple Road. Please follow marshals' directions to ensure tight parking and efficient entry / exit. Walk to race HQ, via Woodlands Park, approximately 1 km and flat, but likely to be muddy in places. The route to HQ will be marked.

Car Park 4 - Vernon Park. SK1 2GT



Approximately 70 places. This carpark will not be marshalled. Any competitor may choose to use this carpark. The route to HQ is entirely on tarmac, but is around 1.3km and involves a steep walk up the hill.

See next page for a view of all car parking areas and approaches...

Yellow markers are entry and exit points for vehicles.

