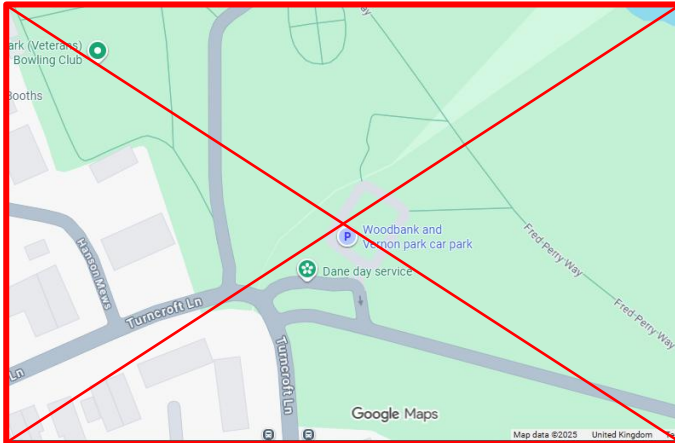


# Car Parking Plan for Woodbank Park 11<sup>th</sup> October

## Car Parking Areas

There will be three car parking areas on the day. Please note they are not all the same as in March 2025. Please car share if possible.

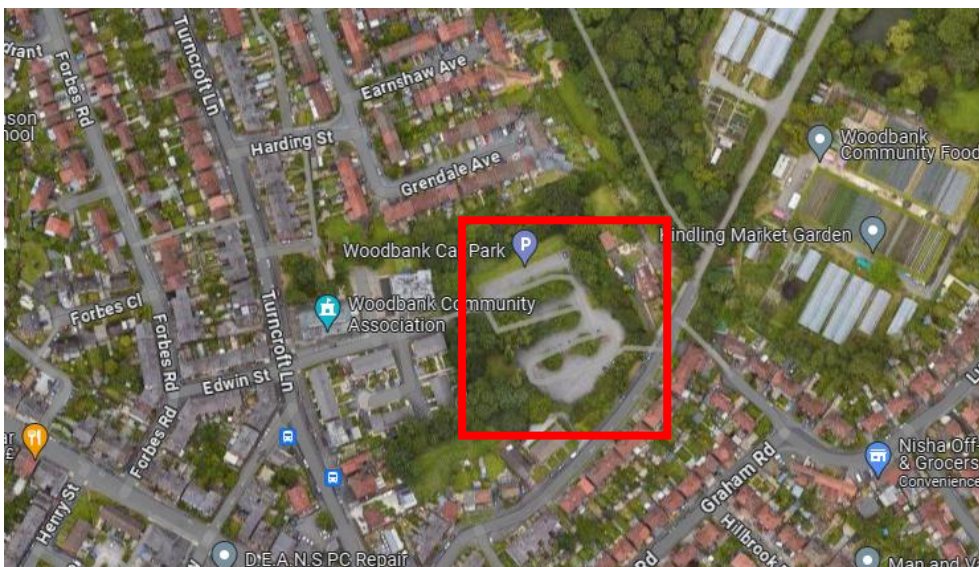
Please **do not** use the Woodbank and Vernon Park car park to the north west of Woodbank Park, off Turncroft Lane, as we want to reserve this for the usual park users.



With the exception of race organisers, timers and 1<sup>st</sup> Aid, there will be no traffic access into Woodbank Park.

Please park one of the following car parks:

## Car Park 1: Woodbank Car Park

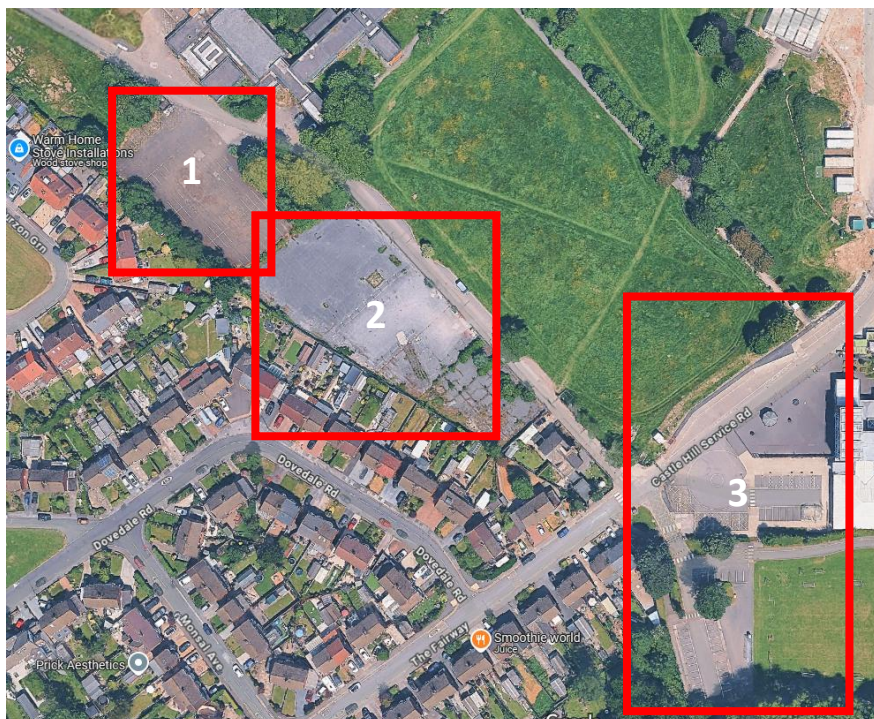


Woodbank Car Park should be used by those arriving with tents / gazebos and for competitors in junior races. It is likely to fill up quickly. Note that this car park is height and width restricted to 2m, so no camper vans. Please follow marshals' instructions when you arrive.

There is residential parking immediately outside the car park entrance, and also parking for the Woodbank community centre. **These areas are strictly out of bounds for competitors.**

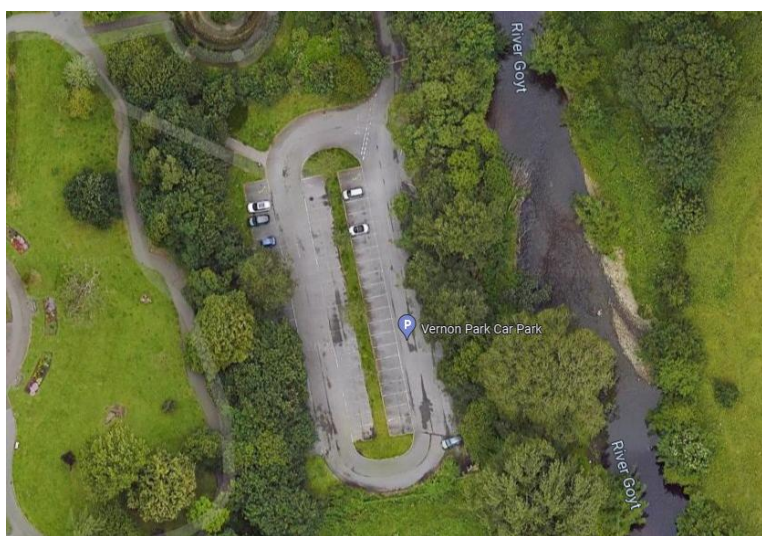
## **Car Park 2: Car parking zones accessed from The Fairway**

For senior runners and anyone arriving after 12pm, please go to this parking area, not Car Park 1. There are three separate car parking zones accessed from The Fairway, (off Marple Road / Offerton Lane, A626). The areas 1 to 3 will be opened in turn as each car park fills up. There will be a marshal at the end of Fairway to direct cars into the appropriate car park zone. Please follow marshals' instructions. Note that these car parks are approximately 1.2km from race HQ, but the route is flat and easy. Ensure you allow 15 mins to get to HQ.

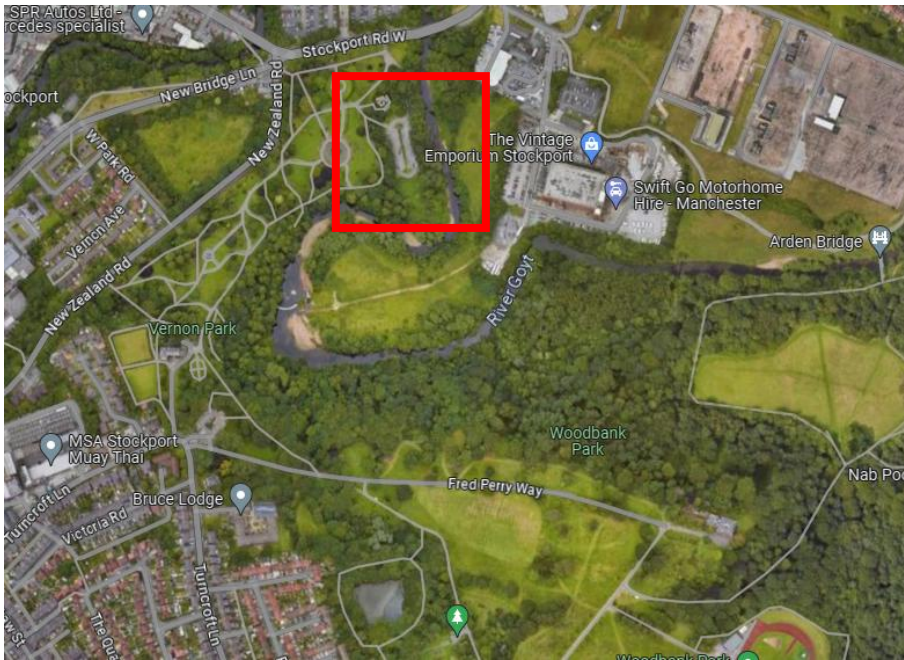


**Note you must exit the car park by 16:30 as we need to lock up.** Last season lock-up had to be delayed because some competitors had apparently gone to the pub.

## **Car Park 3: Vernon Park Car Park**







Vernon Park car park has approximately 70 places. This car park is open to the public and will be unmarshalled on the day, but you are free to use it. Note: it's a big hill to walk up to the main HQ and about 1.2km.

### All car parking areas and approaches

